

TATES

020 7602 6020



Edith Villas, London W14 9AH

£2,600 Per month

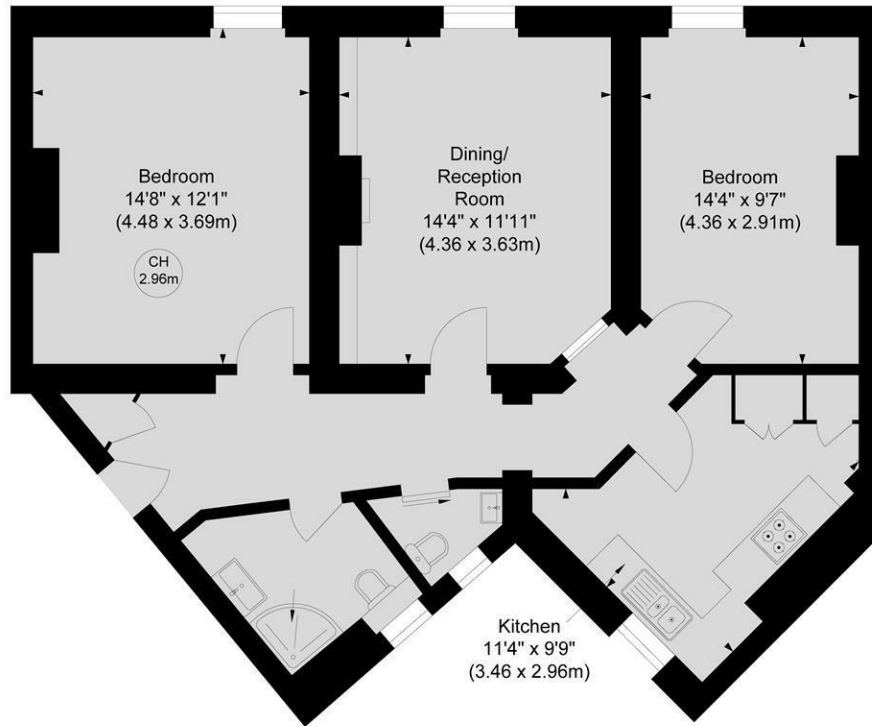
- Two Double Bedroom Apartment
- Modern Shower Room
- Short Walk To West Kensington Tube
- Council Tax Band E - Hammersmith & Fulham
- Spacious Eat In Kitchen
- Guest W/C
- Furnished

WELLESLEY MANSIONS, W14

Approximate gross internal area

849 sq ft / 78.88 sq m

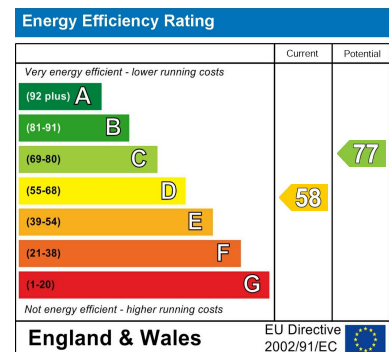
Key :
CH - Ceiling Height



THIRD FLOOR

Not to scale, for guidance only and must not be relied upon as a statement of fact.
All measurements and areas are approximate only

Whilst these particulars are produced in good faith and are believed to be correct, no guarantee is given, nor any responsibility accepted, by Tates nor by any of its representatives, for their accuracy. The particulars do not constitute part of any offer or contract, and it is recommended that such things as measurements, condition, structure, services, appliances, fixtures and fittings and facilities are all independently assessed by the prospective purchaser or renter of the subject property prior to committing to any contract.



135 Hammersmith Road, West Kensington, London W14 0QL

mail@tatesestates.co.uk

tatesestates.co.uk

Tates (Agents) Ltd. Registered in England and Wales No. 02356337
Registered Office: Imperial House, 8 Keane Street, London WC2B 4AS

